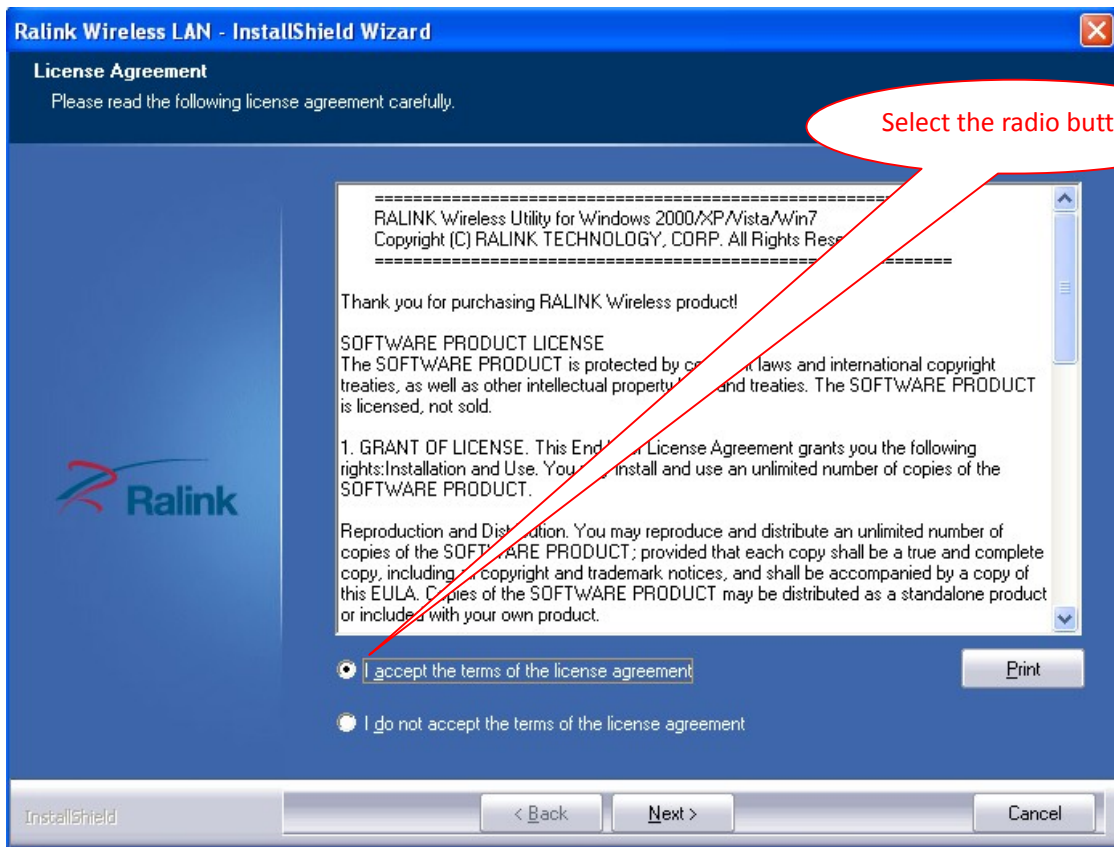


Driver Installation

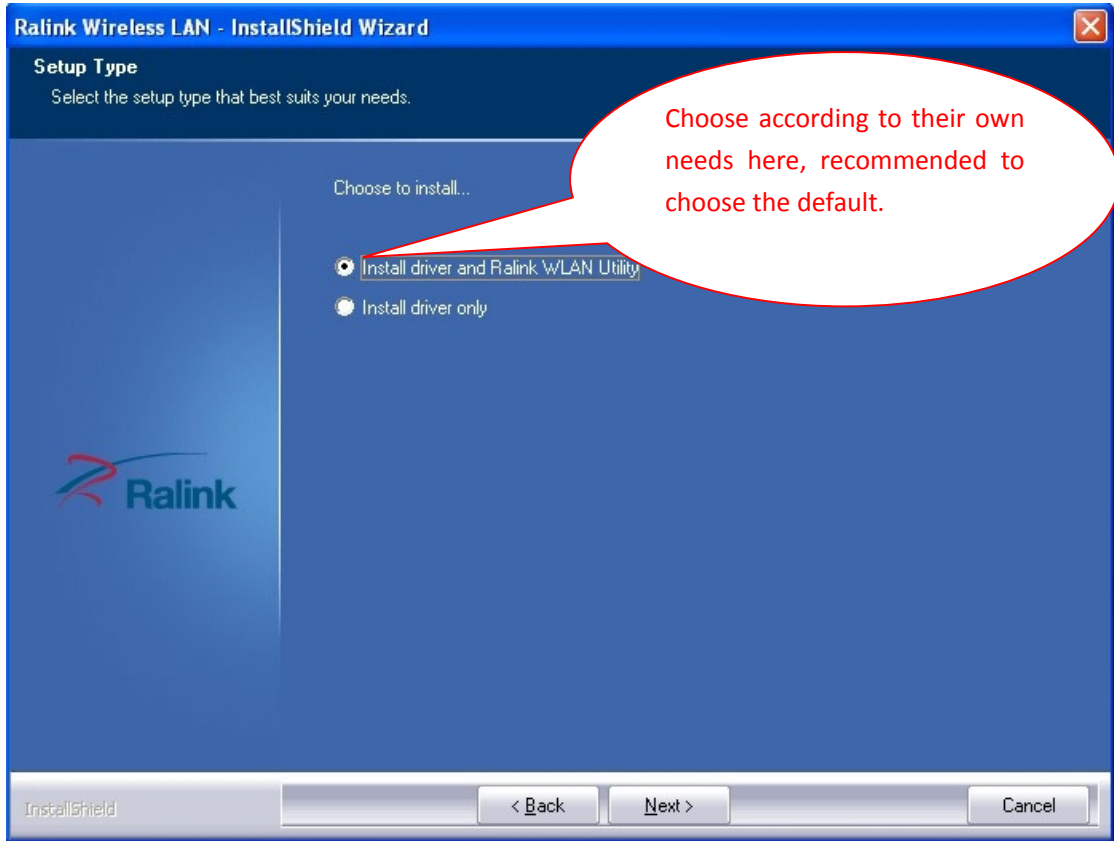
1. First product into the computer, turn on the computer. A "Found New Hardware Wizard" (for example, the wizard does not appear, then the computer does not find the product, reinstall about the product) ,Open the driver CD, locate the appropriate driver. Click on "setup.exe".



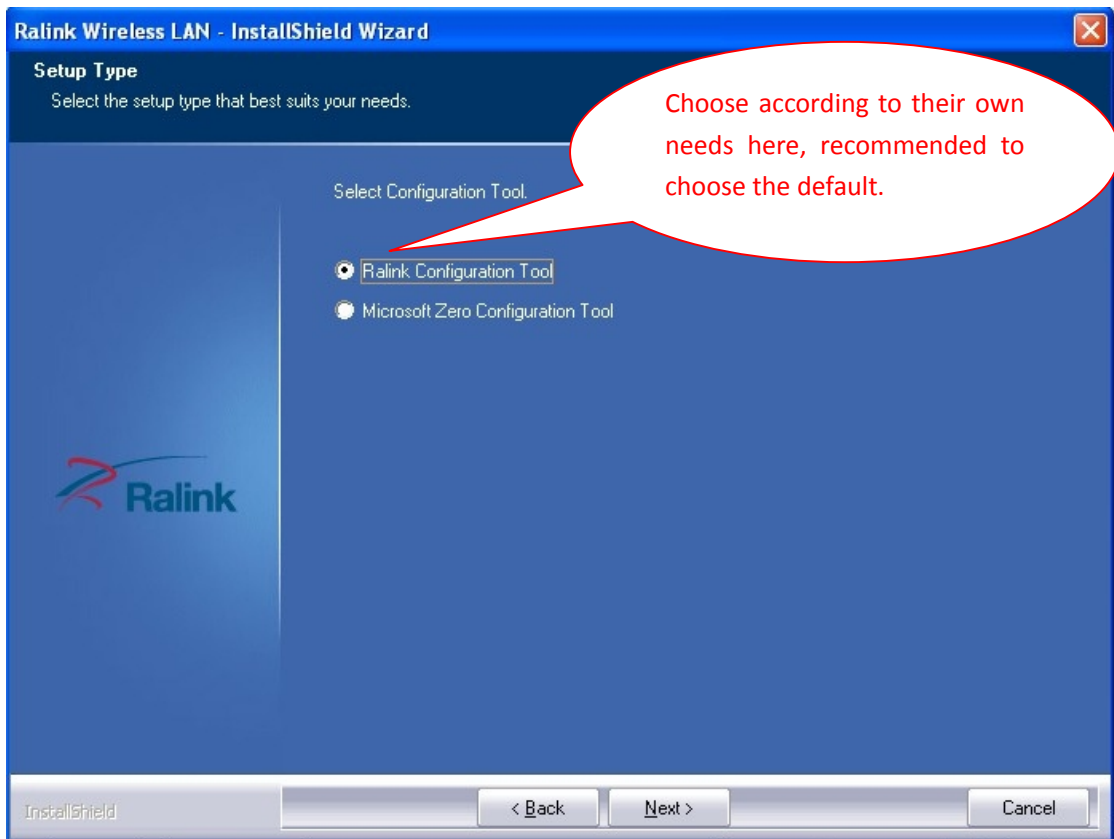
2. Select "I accept the terms of the license agreement", click "Next."



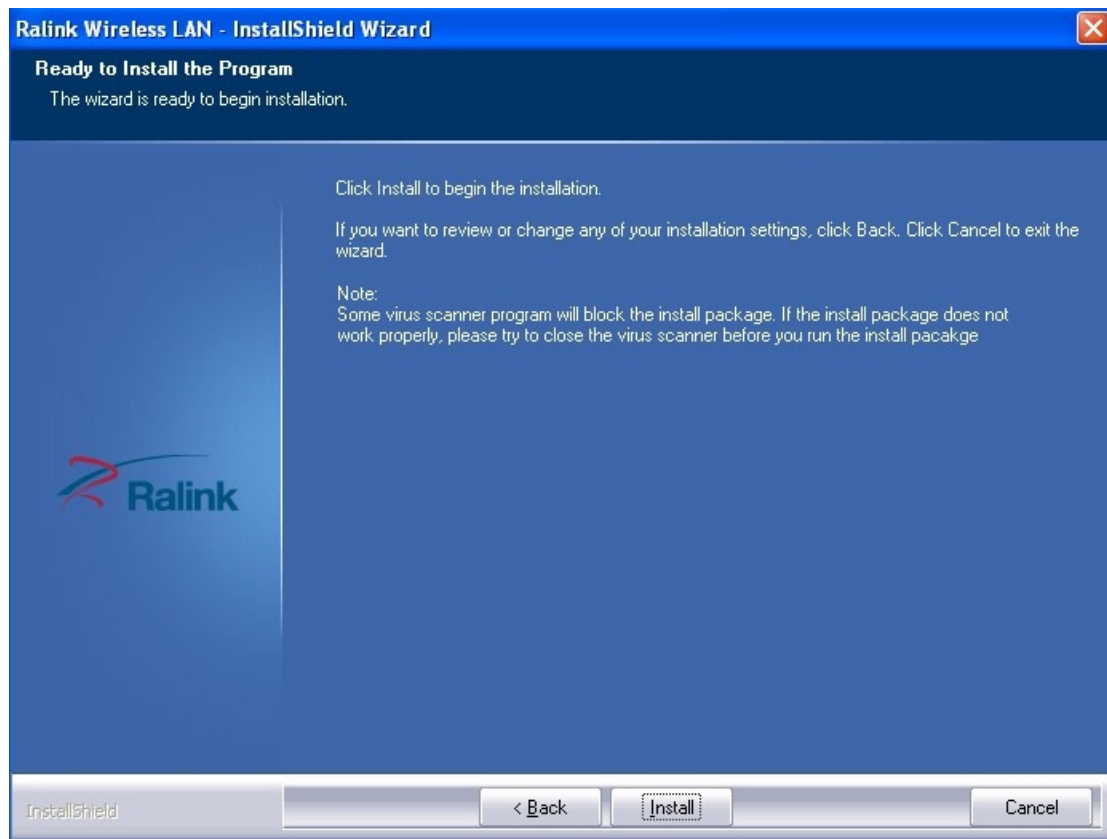
3. click "Next" .



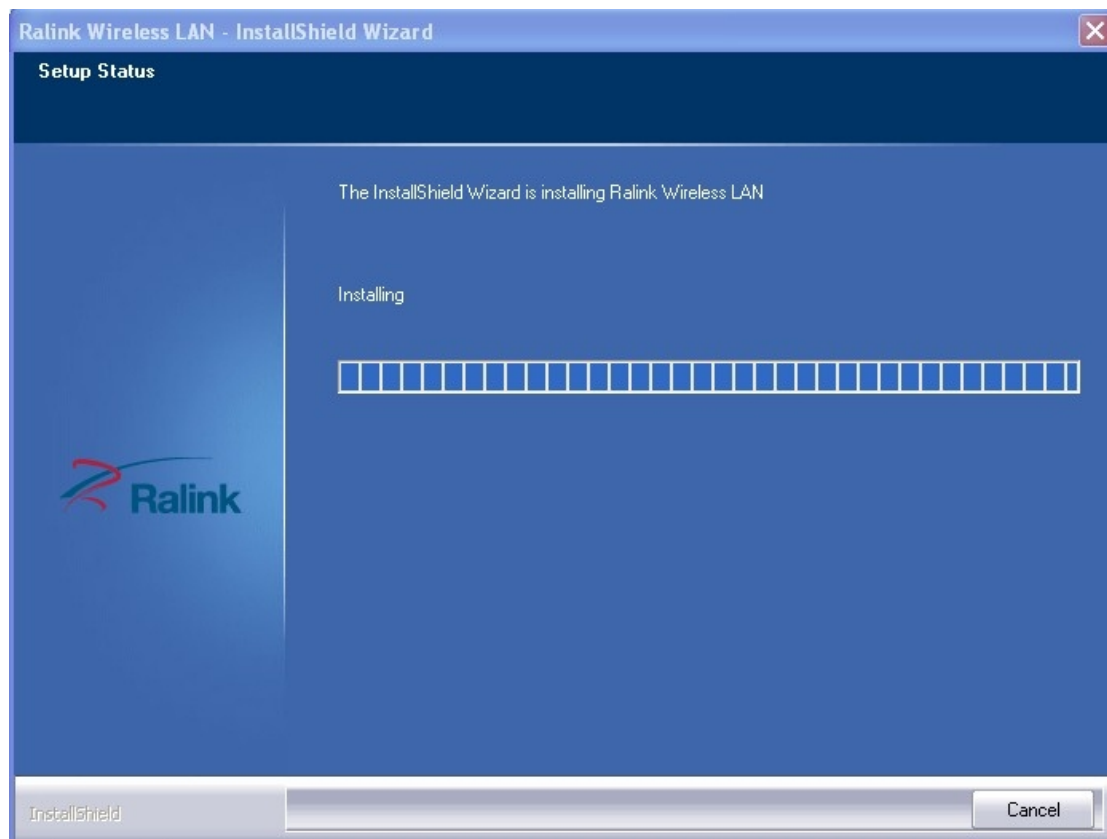
4. click "Next".



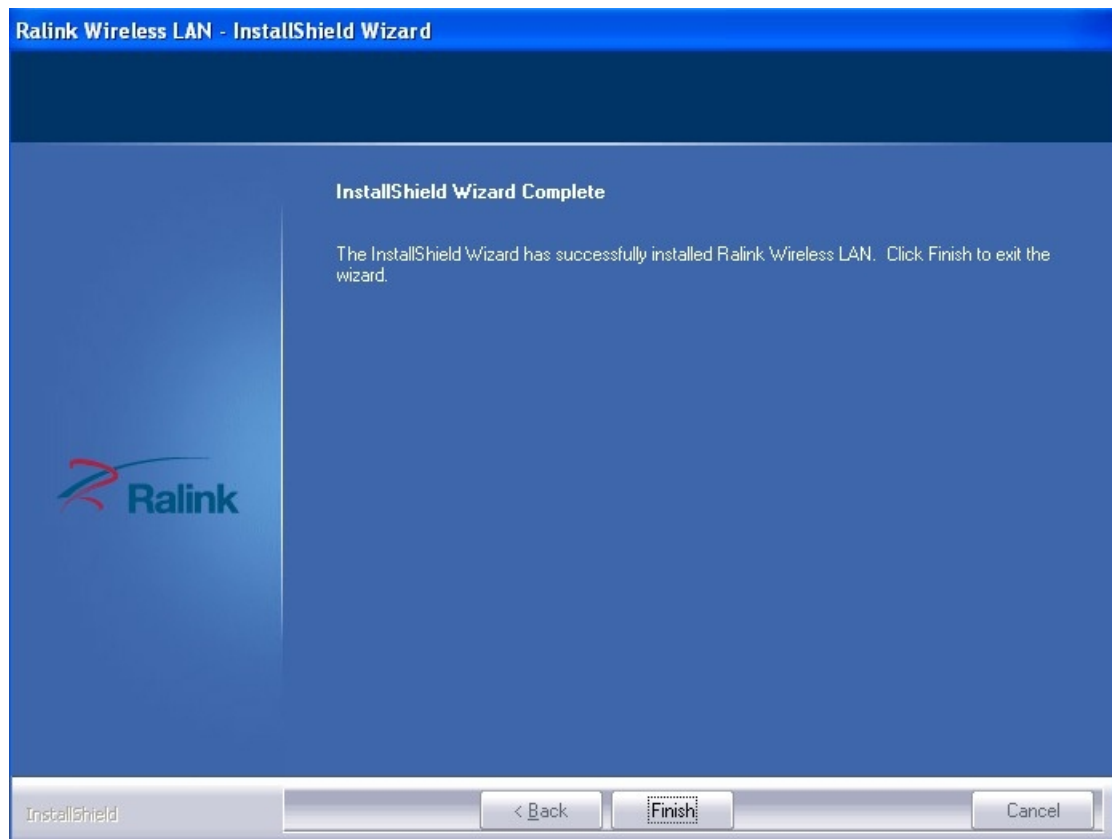
5. click "Install"



6. The ongoing drive installation.

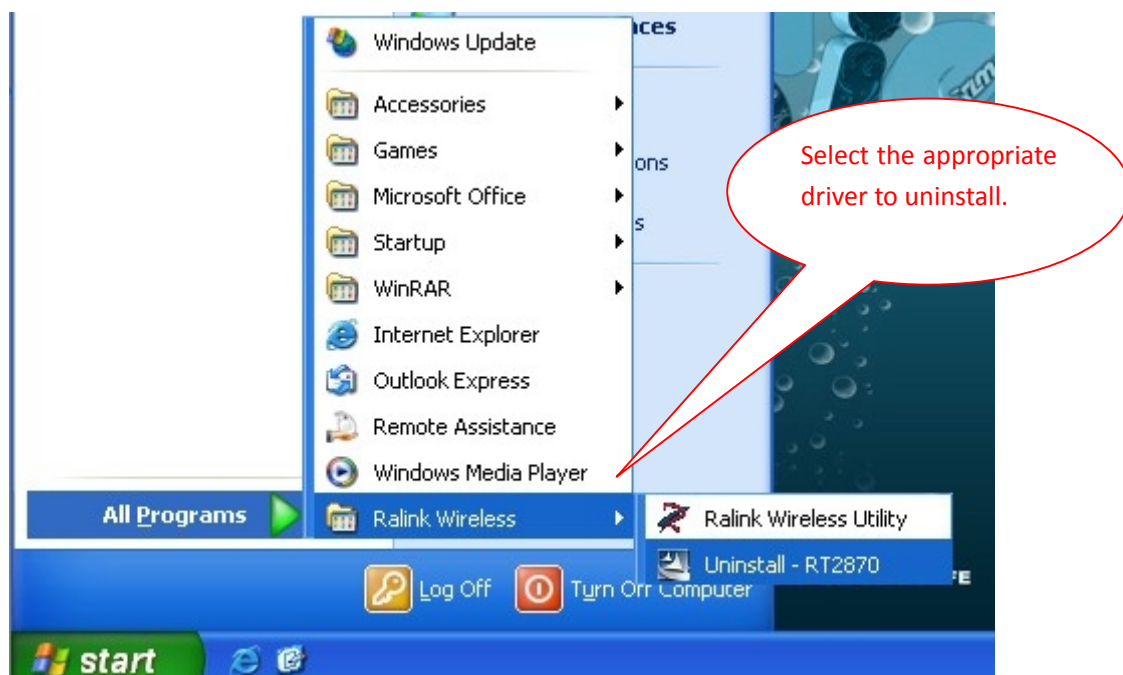


7. Click "Finish", the driver installation was successful.



Uninstall Driver

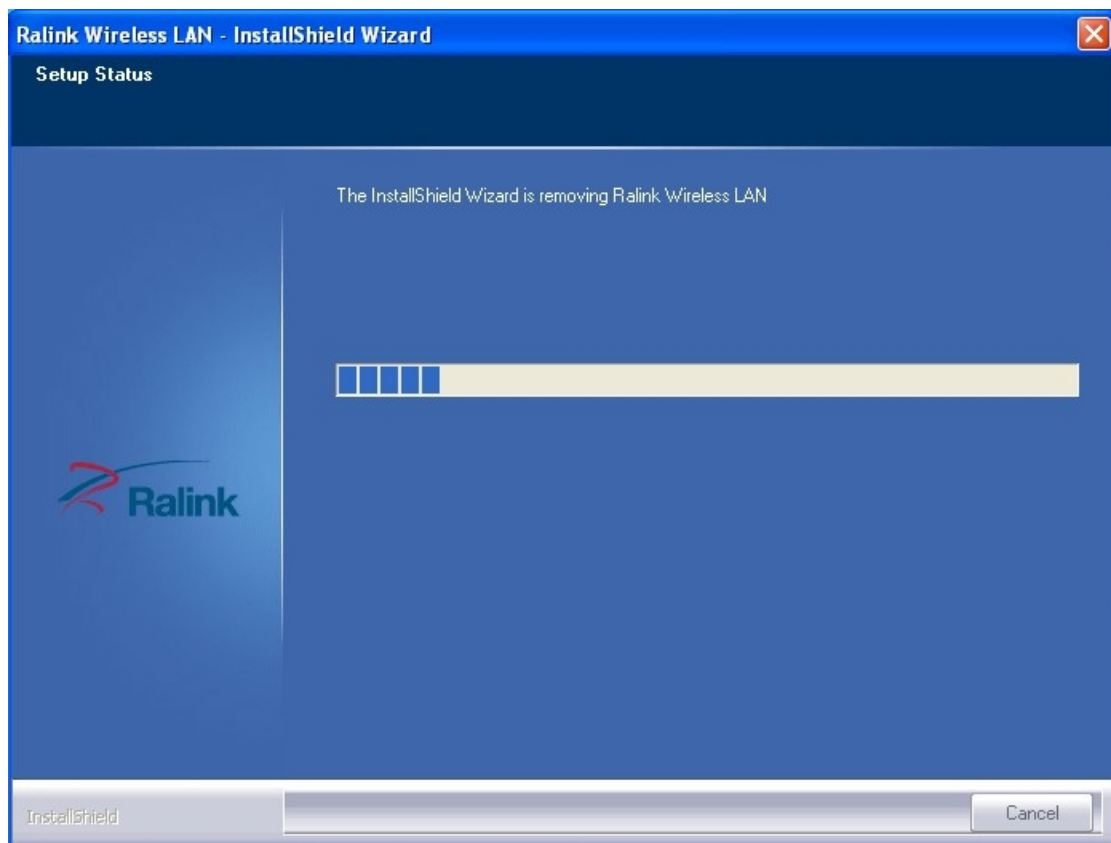
1. Click "Start" → "All Programs" → "Ralink Wireless" → "Uninstall-xxxx".



2. Click "Yes".



3. Uninstall the driver is unloading in the.



4. Click "Finish", the driver has been uninstalled.

